

ENSIS PRESENTS



# HULHUMAA

R E S I D E N C E

JOINT DEVELOPMENT BY  
ENSIS AND ASSOCIATED BUSINESS AGENTS PVT LTD





# HULHUMAA

R E S I D E N C E

Homely and cozy small apartment block in the heart of Hulhumale.

Hulhumaa Residence is a midrange property offering great value for money. Spacious and private. 3 room (2 big room and a Small room) with comfortable and functional design. Ideal as a home or for real estate investment.

## The highlights:-

- Optimal space saving design
- Low density private living
- 14 apartments total in the block, just 2 apartments on each floor
- Beautifully designed terrace common area
- Kitchen convertible, open or closed
- Inside parking area
- Lobby area



## 3 ROOMS

### Apartment A / 1st Floor

TOTAL AREA : 861 sqft

A cozy 3 rooms apartment with spacious living and ample space for laundry. This apartment is perfect for couples with a kid. With an extra non-accessible planter area for a beautiful view.

1st Floor

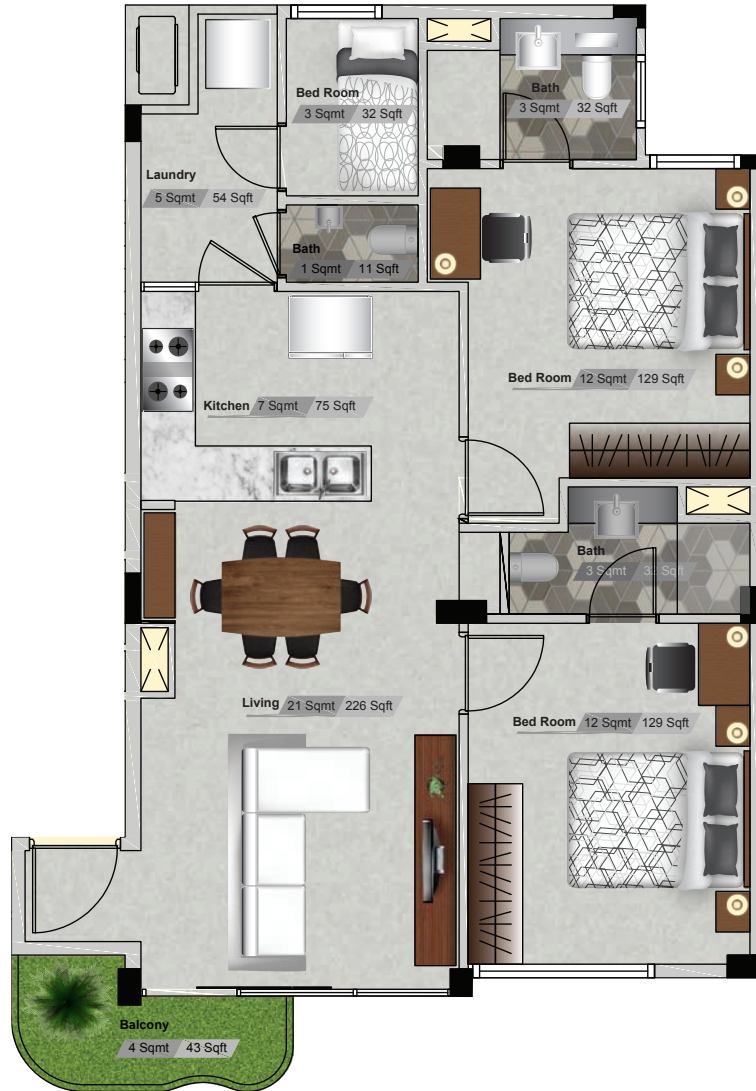
Apartment - A

Apartment - B

GULCHAMPA  
MAGU

3 BEDROOM | 3 TOILET

HITHIGAS MAGU - 04 GOALHI



## 3 ROOMS

### Apartment B / 1st – 7th Floor

TOTAL AREA : 840 sqft

A cozy 3 rooms apartment with spacious living and ample space for laundry and spacious kitchen area. This apartment is perfect for couples with a kid.

1st - 7th Floor

Apartment - A

Apartment - B

GULCHAMPA  
MAGU

3 BEDROOM | 3 TOILET

HITHIGAS MAGU - 04 GOALHI



## 3 ROOMS

### Apartment A / 2nd - 7th Floor

TOTAL AREA : 861 sqft

A cozy 3 rooms apartment with spacious living and ample space for laundry and spacious kitchen area. This apartment is perfect for couples with a kid.

2nd - 7th Floor

Apartment - A

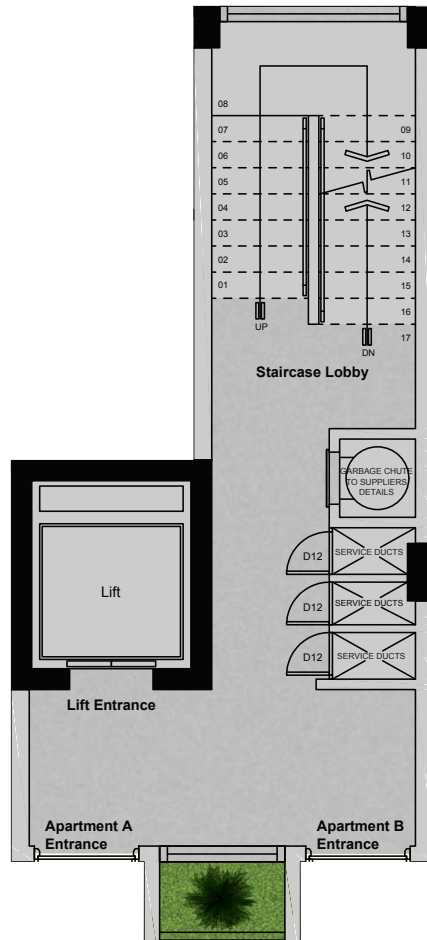
Apartment - B

GULCHAMPA  
MAGU

3 BEDROOM | 3 TOILET

HITHIGAS MAGU - 04 GOALHI

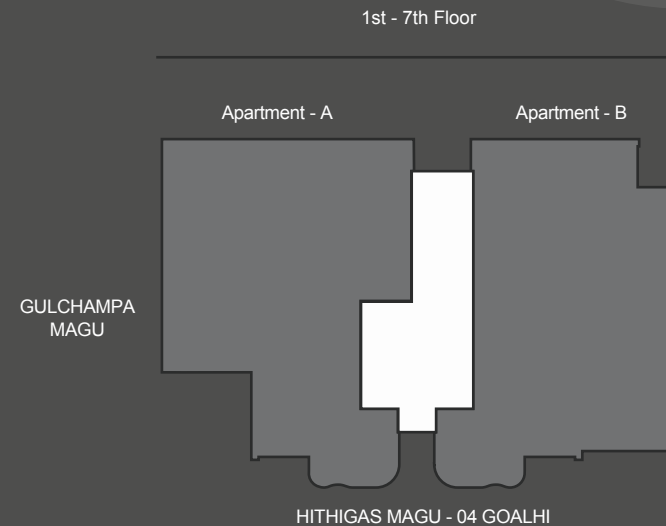


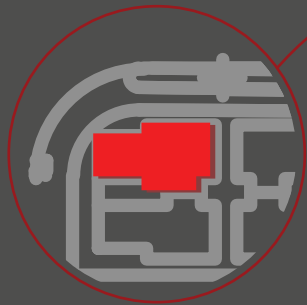


# LIFT AND STAIRCASE AREA

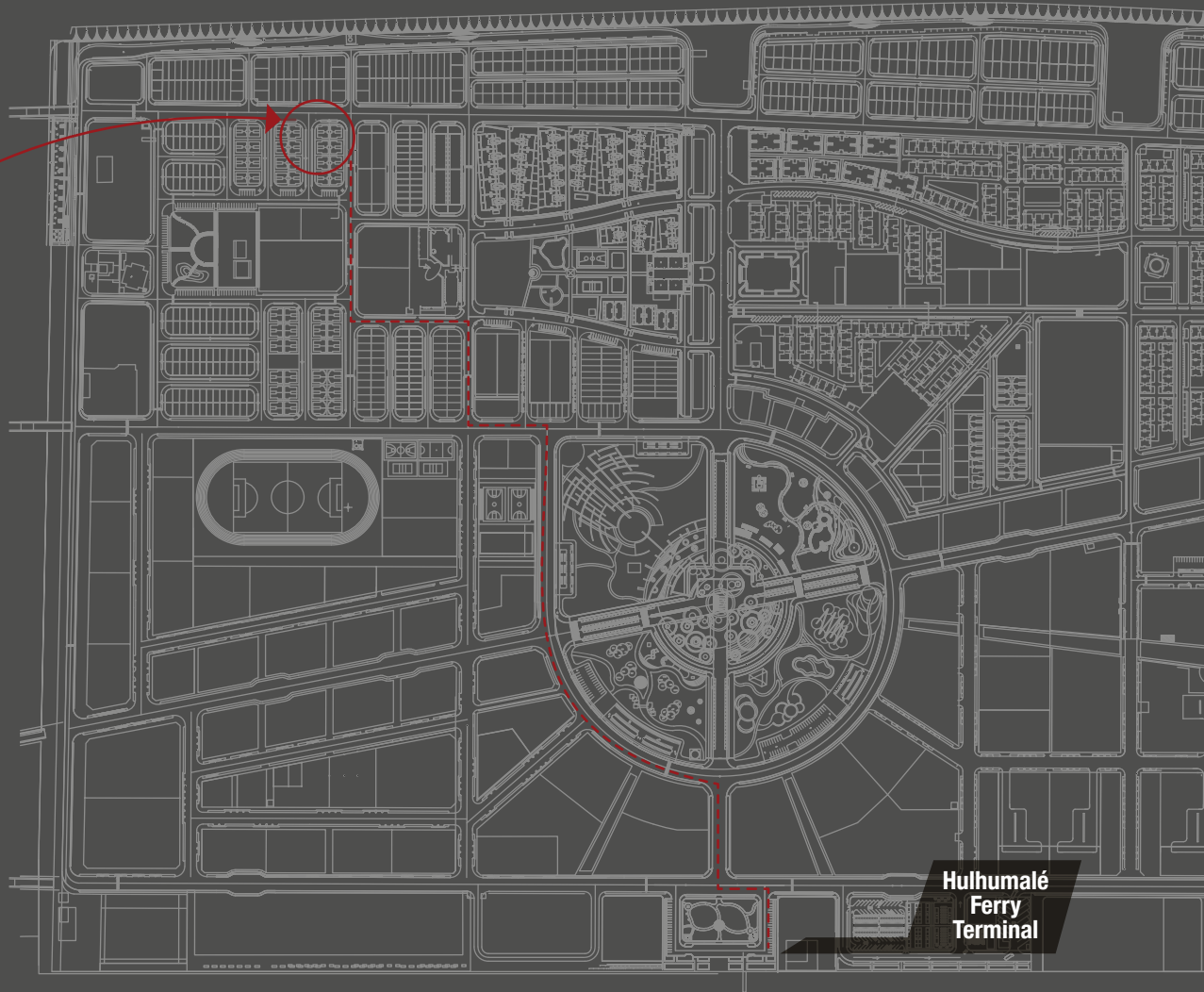
## 1st - 7th Floor

Lift and staircase area spacious and comfortable walk way equipped with lift and garbage disposal.





  
**HULHUMAA**  
RESIDENCE





HULHUMAA

R E S I D E N C E

BY ENSIS

Email: [hello@hulhumaa.com](mailto:hello@hulhumaa.com) | 9566688 | 7976688

Ensis fisheries | M1 15-16 Industrial Zone - Hulumalé | Midhilimagu | 335 6677